

Term 1:
14th February - 2025

What's Happening at RPS

Rutherglen Primary School
Newsletter



DATES TO REMEMBER:

New events added to the
calendar in this
newsletter - check them
out!

Mon 11th March -
Labour Day Public
Holiday



A REMINDER:
**ALL STUDENTS
REQUIRE AN ART
SMOCK!**

Student arrival time at
school **8:40am**
onwards -staff
supervision starts at
this time
Morning bell is at 9am.



What a start to 2025!

Our first few weeks back have been fabulous, with students settling into the new school year with enthusiasm and a readiness to learn and engage positively both in and out of the classroom. We especially welcome to RPS our Foundation students and other students across various year levels, as well as their families, all of whom are settling in well. Thank you to families who ensured that their child/ren were well organised and ready for the start of the year. We do have a few students who are still yet to sort out the uniform policy requirement of all black footwear, and we ask that families attend to this as soon as possible. We have a large number of second-hand uniforms available from the Office this week and it has been great to see lots of families popping in to grab some of these. There is still plenty available, so please call in if you would like any additional uniforms. Please see Debby if you need support with uniforms at any stage throughout the year.

School Council Elections opened Friday 14th Feb. There are 4 parent and 3 DET employee positions vacant. Please consider becoming a part of our School Council - further information within this newsletter. Nomination forms are available from the Office or as sent out via Compass.

A reminder to all families that in the interest of student safety, the staff car parks at the rear and front of the school are not for parent/carer parking or for quick drop off or pick ups. Additionally please adhere to the no stopping zones on either side of the school crossing at both the front and rear of the school. We would ask that students and parents/carers use the school crossings for everyone's safety and that students are not asked to quickly run across the street to their family's car. We have in the past had some near misses with students and ask that you please think of your child's safety.

2025 Student Leaders

Our Student Leaders of 2025 were presented with their leadership badges at Assembly on Friday, with our School Captains leading their first Assembly of the year and doing a magnificent job. Meet all of our leaders in this newsletter. We wish them all the best as they represent their fellow students and our school and carry out their role in a variety of ways across the year.

UPDATE YOUR CONTACT DETAILS for 2025

Families are asked to login to Compass and check the personal details of their child/ren, such as residential address, phone numbers, email and emergency contacts details. Please drop the via the Office to complete a change of details form or contact our Office to have a form emailed to you or sent home with your child. Please note that any person who is not listed on your child's enrolment as an emergency contact is unable to collect your child from school during school hours, this includes relatives.

regards
Karryn Williams - Principal

2025 CALENDAR

TERM 1 - Wed 29th January - Friday 4th April

Wed 26th Feb	O&M Division Swimming
Fri 28th Feb	Crazy Day - crazy hair, crazy dress day - Gold coin donation - Run by the SLT + Assembly
Fri 7th March	Hume Regional Bowls
Mon 10th March	Labour Day Public Holiday - students do not attend school
Tues 11th March	School Council AGM & Meeting
Wed 19th March	Rotary Dinner catering fundraiser
Fri 4th April	Last day of Term 1 - 2:30pm finish + Easter Parade and Easter Raffle Draw

TERM 2 - Tues 22nd April - Fri 4th July

Tues 22nd April	Year 3-6 Swimming program - Wangaratta
Thurs 24th April	Foundation - Year 2 Swimming Program - Wangaratta
Fri 25th April	ANZAC Day
Tues 29th - Wed 30th April	Science Incursion - all year levels
Tues 29th April	Year 3-6 Swimming - Wangaratta
Thurs 1st May	Foundation - Year 2 Swimming
Tues 6th May	Year 3-6 Swimming - Wangaratta
Thurs 8th May	Foundation - Year 2 Swimming
Fri 9th May	Mother's Day Stall
Wed 21st May	Year 4 Transition to RHS
Tues 27th May	House Cross Country - Lake King + Glasses for Kids program
Thurs 22nd May	School Photos
Tues 3rd - Fri 5th June	Year 3-4 Camp - 15MCC
Wed 4th June	OM Cross Country - Wangaratta
Mon 9th June	King's Birthday Public Holiday
Tues 10th June	Curriculum Day - students do not attend school
Fri 13th June	Hume Cross Country - Benalla
Wed 2nd July	Winter Sports Day - Year 5/6 - Wangaratta
Fri 4th July	Last Day of Term 2 - 2:30pm finish

2025 CALENDAR

TERM 3 - Mon 21st July - Fri 19th Sept

Fri 4th July	Year 5 Transition - RHS
Fri 5th Sept	Father's Day Stall
Thurs 11th Sept	House Athletics Day
Fri 12th Sept	Curriculum Day - students do not attend school

TERM 4 - Mon 6th Oct - Fri 19th Dec

Wed 15th - Fri 17th Oct	Robotics Incursion
Mon 3rd Nov	Curriculum Day - Report Writing Day - students do not attend school
Tues 4th Nov	Melbourne Cup Public Holiday
Tues 11th Nov	Remembrance Day
Wed 19th - Fri 21st Nov	Year 5-6 Canberra Camp
Thurs 18th Dec	Pool Party
Fri 19th Dec	Last day of Term 4 - 1:00pm finish

CSEF—Camps Sports & Excursions Fund is provided by the Victorian Government to eligible families to assist with the cost of school trips, camps and sporting activities. If you hold a valid means-tested concession card or are a temporary foster parent, you may be eligible for CSEF. The allowance is paid to the school to use towards related expenses for the benefit of your child regarding camps, sports, excursions. The annual CSEF amount per primary school student is: \$154 TO APPLY: Complete a CSEF application form using the link below or collect from the Office. Sign and date the form, and return it to the school office. The CSEF process for 2025 closes on July 4, 2025. You need to provide a copy of your Centrelink Card when you return the form. For concession card holders, CSEF eligibility will be subject to the parent/carer concession card being validated successfully with Centrelink on the first day of either Term 1 (28 January 2025) or Term 2 (22 April 2025). If you have previously applied for the CSEF at RPS in 2024, you do NOT need to complete an application form in 2025, unless there has been a change in family circumstances, such as a change of custody, change of name or change of concession card number. For more information and the application form, visit <https://www.education.vic.gov.au/about/programs/Pages/csef.aspx>



Wanted for the Art Room

square cardboard cartons 1lt *and* cane baskets (examples)



Introducing... Our Student Leaders Of 2025



SCHOOL CAPTAINS

Will Lindsay, Emily
Chandler, Poppy
Williams, Luke Partridge

STUDENT LEADERSHIP CAPTAINS

Alexi Strachan, Hannah
Williams, Aroura Lewis,
Phoenix Schilg



STUDENT LEADERSHIP TEAM

YEAR 5 -Stella Brown, Sienna Collins, Bonni Ellis, Scarlet Giannone

YEAR 4 - Gabe Eloy, Tiahn Heard, Will Spence, Georgia Wilkinson

YEAR 3 - Lenny Griffin, Kayden Gromek, Nikaela McInnes, Lettie Strachan

S



BLUE HOUSE CAPTAINS

Jed Lawler & Will Donaldson



GREEN HOUSE CAPTAINS

Poppy Allison & Chloe Brockhoff



RED HOUSE CAPTAINS

Jenson McInnes & Tyler Collis



YELLOW HOUSE CAPTAINS

Taylor Hurley & Ryeder Decker



Respect

Responsibility

Integrity

Empathy

RPS Values Awards acknowledges students who display our school values and expectations by the choices they make in their daily actions - Weeks 1 & 2

Foundation

Indi Wilkinson - showing respect in our learning space! We love how you are looking after your own belongings and supporting others to do the same. Keep it up Indi!

Spencer Waite - showing respect to your teachers and classroom peers. We love how you are using your mat and table manners during learning time. Well done Spencer!

Willow Crawford - being a kind and caring member of our class. We love how you always share to make sure no-one misses out! Especially her pillow during our rest time. Thank you, Willow!

Lizzie Leenaerts - for being such a responsible learner! You are always listening to your teacher, following instructions and completing your work to the best of your ability! Well-done Lizzie!

Year 1-2

Nixon Frampton - for the amazing start you've made to the year! Nixon, you have been super organised with your belongings, ready to learn and having a red-hot go at everything.

Jay Seymour - for the fabulous start you've made to the year. You listen intently for instructions and always ask questions if you are unsure. Keep up your great efforts, Jay!

Wynter Griffin - for being a responsible member of our class. You are ready for learning, and always kind to others during play time.

Annabelle Adams - for showing respect in our classroom. You listen intently and have tried your best during your first week at Rutherglen Primary School. Keep it up!

Year 3-4

Xavier Giannone - for starting off the year showing great Integrity and Respect both in and out of the classroom. Your peers have noticed how you are always focussed and working hard on your learning!

Amber Holt - for starting the year and settling in with a positive attitude and showing our school values. You are happy to have a go and try your best in all learning tasks. Keep it up Amber!

Ella Donaldson - for starting the year off showing all our school values. You have been kind and empathetic by welcoming new students to our school, and it has been great to see you take responsibility in your learning. Keep it up, Ella!

Kyden Skate - for being a respectful member of 3-4G. You have shown a positive attitude towards your learning, worked well with all your classmates and have been engaged in whole class discussions. Well done on your great start to the year, Kyden!

Year 5-6

Amelia Kelly - for the outstanding effort you have put into each and every learning task since beginning the year in the 5/6 Unit. You should feel proud of how well you have started the year.

Ryeder Decker - for starting the year with positivity and enthusiasm. You have contributed to class discussions, been a helpful member of the class and a responsible buddy. Keep it up Ryeder!

Austin Loizeau - for having a wonderful first week at Rutherglen Primary School. You have settled in so well, and it is a pleasure to have you in our class. Well done, Austin

Tyler Collis - for being a fantastic role model, and supporting your buddy to feel confident at school. Great stuff Tyler!

**Pride of
RPS...
Gabe**



ART

F: Addie A - for a great start to the year in the art room! I loved seeing the detail in your drawing and hearing you share about your work with us like a true artist!

1-2: Miguel Dos Santos - for showing excellent responsibility in the art room! It is great to see you approaching your artwork with care and thoughtfulness and respecting your classmates working around you by keeping your workspace tidy. An amazing start to Term One, Miguel!

3-4: Demi Joyce - for having a focused and productive Art session, ensuring progress with your projects. A great start to the year Demi!

5-6: Olli Leeman - for using your time in art effectively to ensure you are well on track with your projects. Keep up the great work Olli!

STEM

1-2: Camilla Brown - for starting the year in STEM as a respectful member of the class. You knew what was expected of you from the moment you walked in and displayed the behaviours that we expect to see at RPS throughout the lesson. Keep up the great work Camilla!

3-4: Gabe Eloy - for being a responsible learner in our STEM class. You have given a lot of effort into your work, and have shown a keen interest in our inquiry topic and discussions. I especially loved your note taking! Well done Gabe!

5-6: Mackenzie O'Meara - for showing the values of RPS in the STEM classroom. You were focused on your learning, participated eagerly in all class discussions and brought enthusiasm which rubbed off on your peers. Keep up the great work Mackenzie!

FRENCH

F: Clement Stanuga - well done Clement for enthusiastically participating in French class. Keep it up!

1-2: Becca Snelson - it is wonderful to see you always ready-to-learn in French class, Becca! You listen well and are willing to work together in your learning. Keep it up!

3-4: Jed Williams - you are off to a flying start in French, Jed! In your first class you displayed all the values. Keep it up!

5-6: Alyssa Lowen-Webb - You always show all our school values in French class, Alyssa! You are participating in class discussions, and it's awesome to see you growing as you practise your French. Keep it up!

PE

F: Felicity Ellis - thank you for your energy, enthusiasm and beaming smile you bring to our PE sessions and for always giving every game a go and trying your best!

1-2: Connor Parr - well done on showing terrific determination, focus and control during our hockey session this week. You never gave up on the challenge of learning a new sport and you should be extremely proud of your efforts.

3-4: Theo Wall - well done for your commitment in sport this week and putting your best efforts in. Thank you for showing responsibility when it came to packing up the equipment and a willingness to help, this does not go unnoticed.

5-6: Amelia Colvin - thank you for being a wonderful role model to your peers during our hockey session this week and for encouraging and supporting your team in each and every game.

SWPBS

Positive Behaviour in the Playground



Jed Lawler - being a great Buddy and making your Foundation buddy feel safe
Hunter Mills - asking permission to leave the grounds to get a ball



Hollie Lomax - being kind to others in the playground
Toby Hindle-Peacock, Amelia Kelly, Mille Otin, Harriette Buller - keeping school clean by picking up rubbish
Verity Cooper - valuing our play equipment and the environment



Gabe Eloy, Locki Bell & Ella Donaldson - getting a teacher to help when there was an issue
Samson Monteith - playing honestly in the Gaga Pit
Theo Wall & Leveigh O'Toole - using your strategies to move away from a situation to calm down



Ryeder Decker - showing great leadership skills toward your Foundation buddy
Poppy Williams & Olli Leeman - taking care of others by helping Madame Geard
Maisy Livingstone - including others
Verity Cooper - taking care of others

Year 1 & 2 Art!



Our Year 1 & 2 artists are off to a flying start with their painted birds inspired by Australian artist, Anna Batman!



Appendix A

Fact sheet 1: school council elections – information for parents

What is a school council and what does it do?

All government schools in Victoria have a school council. They are legally constituted bodies that are given powers to set the broad direction of a school, in accordance with Ministerial Order 1280 Constitution of Government School Councils, and the *Education and Training Reform Act 2006*. In doing this, a school council may directly influence the quality of education for students.

Who is on the school council?

For most primary school councils, there are several possible categories of membership:

- **A mandated elected parent member category** – more than one-third of the total members must be from this category according to Ministerial Order 1280. Department employees can be parent members at their child's school providing that they are not engaged in work at the school.
- **A mandated elected school employee member category** – members of this category make up no more than one-third of membership. The principal of the school is automatically one of these members.
- **An optional community member category** – members are co-opted by a decision of the council because of their special skills, interests or experience. Department employees are not eligible to be community members.

Generally, the term of office for all members is two years. The term of office of half the members expires each year, creating vacancies for the annual school council elections.

Why is parent membership so important?

Parents on school councils provide important viewpoints and have valuable skills and a range of experiences and knowledge that can help inform and shape the direction of the school.

Those parents who become active on a school council find their involvement satisfying and may also find that their children feel a greater sense of belonging.

Do I need special experience to be on school council?

Each member brings their own valuable skills and knowledge to the role, however, in order to successfully perform their duties, councillors may need to gain some new skills and knowledge.

It is important to have an interest in your child's school and the desire to work in partnership with others to help shape the school's future.

Code of conduct for school councillors

School councils in Victoria are public entities as defined by the *Public Administration Act 2004*.

School councillors must comply with the Code of Conduct for Directors of Victorian Public Entities issued by the Victorian Public Sector Commission. The Code of Conduct is based on the Victorian public sector values and requires councillors to:

- **act with honesty and integrity** – be truthful, open and clear about their motives and declare any real, potential or perceived conflict of interest and duty

act in good faith in the best interests of the school – work cooperatively with other councillors and the school community, be reasonable, and make all decisions with the best interests of students foremost in their minds

act fairly and impartially – consider all relevant facts of an issue before making a decision, seek to have a balanced view, never give special treatment to a person or group and never act from self-interest

use information appropriately – respect confidentiality and use information for the purpose for which it was made available

exercise due care, diligence and skill – accept responsibility for decisions and do what is best for the school

use the position appropriately – not use the position as a councillor to gain an advantage

act in a financially responsible manner – observe all the above principles when making financial decisions

comply with relevant legislation and policies – know what legislation and policies are relevant for which decisions and obey the law

demonstrate leadership and stewardship – set a good example, encourage a culture of accountability, manage risks effectively, exercise care and responsibility to keep the school strong and sustainable.

Indemnity for school council members

School councillors are indemnified against any liability in respect of any loss or damage suffered by the council or any other person in respect of anything necessarily or reasonably done, or omitted to be done by the councillor in good faith in:

a. the exercise of a power or the performance of a function of a councillor, or

the reasonable belief that the act or omission was in the exercise of a power or the performance of a function of a council.

How can you become involved?

By participating in, and voting in the school council elections, which are held in Term 1 each year. However, ballots are only held if more people nominate as candidates than there are positions vacant.

In view of this, you might consider:

standing for election as a member of the school council

encouraging another person to stand for election.

What do you need to do to stand for election?

The principal will issue a Notice of Election and Call for nominations in Term 1 of each year. Council elections must be completed by 31 March, unless varied by the Minister for Education.

If you stand for election, you can arrange for someone to nominate you as a candidate or, you can nominate yourself in the parent member category. You can only be nominated by another member of the same electorate that you are eligible for (e.g. a member of the parent electorate may only nominate another parent of that electorate)

Department employees with a child enrolled at a school where they are not engaged in work, are eligible to nominate for parent membership at that school.

Return your completed nomination form to the principal within the time stated on the Notice of Election. You will receive a Nomination Form Receipt via post, email or by hand delivery.

Generally, if there are more nominations than vacancies a ballot will be conducted in the two weeks after the call for nominations has closed.

Remember

Consider standing for election to school council.

Ask the principal for instructions if you are not sure what to do.

Be sure to vote if the election goes to ballot.

Contact the principal if you are unsure about what is required at any stage of the election process.



Rutherglen Primary School

School Council Election Process and Timetable for 2025

Event	Date
A) Notice of election and call for nominations.	Friday 14th February
B) Closing date for nominations.	Friday 28th February
C) The date by which the list of candidates, nominator and seconder will be displayed.	Monday 3rd March
D) The date by which ballot papers will be prepared and distributed. (If required)	On or before Wednesday 5th March
E) Close of ballot.	Friday 7th March
F) Vote count.	Friday 7th March
G) Declaration of ballot.	Friday 7th March
H) Special council meeting to co-opt Community members (the Principal will preside) Thursday 16th March	Tuesday 11th March
I) First Council meeting to elect office bearers (the Principal will preside)	Tuesday 11th March

SCHEDULE 4: NOTICE OF ELECTION AND CALL FOR NOMINATIONS

- An election is to be conducted for members of the School Council of Rutherglen Primary School.
- Nomination forms may be obtained from the school and must be lodged by 4pm on Friday 28th February.
- Following the closing of nominations, a list of the nominations received will be posted at the school if a ballot is required.
- In the case where a ballot is required due to more nominations than vacant positions, the ballot will close at 4pm on Friday 7th March.
- The terms of Office, membership categories and number of positions in each membership category open for election are as follows:

MEMBERSHIP CATEGORY	TERM OF OFFICE	NUMBER OF POSITIONS
Parent member	From the day after the date of declaration of the poll on 7th March 2025 to and inclusive of the date of the declaration of the poll on 5th March 2027.	4
DET employee member	From the day after the date of declaration of the poll on 7th March 2025 to and inclusive of the date of the declaration of the poll on 7th March 2027.	3

If the number of nominations is less than the number of vacancies, a notice to that effect and calling for further nominations will be posted in a prominent position at the School and via the school's usual communication channels.

Karryn Williams
Principal

Proud of our history – Passionate about the future

Contact:

Rutherglen Primary School
44 Murray St, Rutherglen, VIC, 3685

☎ (02) 6032 9428 📠 (02) 6032 9076

✉ rutherglen.ps@education.vic.gov.au

🌐 www.rutherglenps.vic.edu.au

Karryn Williams:
Principal

✉ karryn.williams@education.vic.gov.au



Je suis
un
échidné vert!



Je suis
un
opossum jaune!



Je suis
un
koala bleu!



French Le français



Je suis
un
kangourou
rouge!



bonjour

Foundation students dressed up
in their sport house colours!
They are learning how to say in
French which house they belong
to: for example, 'Je suis un
koala bleu... I am a blue koala.'

SWPBS - School-wide Positive Behaviour in Schools

What is SWPBS?

School-wide Positive Behaviour Support (SWPBS) is a framework that brings together school communities to develop positive, safe, supportive learning cultures.

SWPBS assists schools to improve social, emotional, behavioural and academic outcomes for children and young people.

When SWPBS is implemented well, teachers and students have more time to focus on relationships and classroom instruction. Students and staff benefit from:

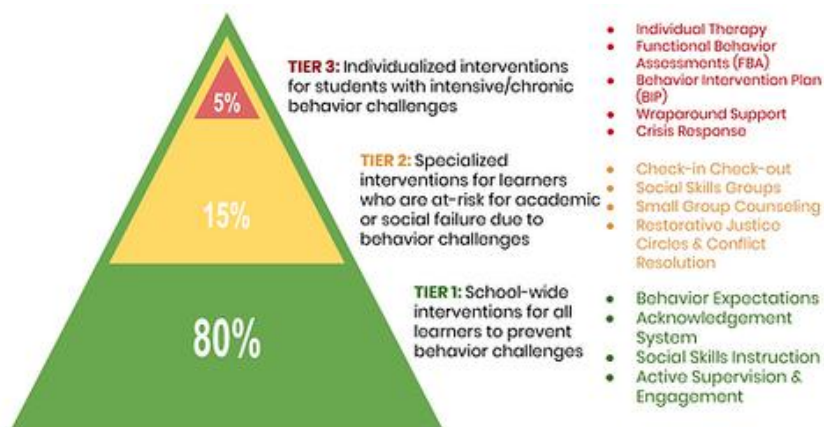
- increased respectful and positive behaviour
- increased time focused on instruction
- improved social-emotional wellbeing
- positive and respectful relationships among students and staff
- increased adoption of evidence-based instructional practices
- a predictable learning environment with improved perceptions of safety and increased attendance.

Rationale

Rutherglen Primary School nurtures a positive climate for learning where students aspire to be their best, are challenged and engaged cognitively, emotionally, socially and physically.

SWPBS is a collaborative effort that actively involves all members of our school - principal, teachers, education support staff, students and families. This cooperative approach recognises the critical importance of consistency and a strong partnership of support between school and home in order to create a safe school and effective learning and wellbeing focused environment.

Our school values - Respect, Responsibility, Integrity and Empathy are supported by the student 'Expected Behaviour Matrix' and the 'Behaviour Management Flowcharts' for both the classroom and the playground. These documents provide the basis for expected behaviours as member of our school and the appropriate procedures and processes to follow to manage inappropriate behaviour.



At RPS we implement a range of supports to meet a range of student needs

TIER 1:

- SWPBS
- Zones of Regulation
- Social-Emotional Learning & Well-being taught weekly in every class
- Respectful Relationships
- Well-being & House groups
- Student Leadership Team & Class meetings
- Education support staff
- Breakfast Club
- Lunch/recess activities & Chess Club

TIER 2:

- Social Stencil - social skills program
- Boys to the Bush
- School Based Chaplain/Mentor
- Counselling Services
- Partnerships with School Focused Youth Services, Gateway Health, Upper Murray Family Care
- Sunshine Circles -2025
- Speech Therapy
- Occupational Therapy

TIER 3:

- Behaviour interventions & support plans
- Art therapy
- Music therapy
- Play based therapy
- Psychology supports
- Partnerships with Headspace, Junction Support, Orange Door



Every student at RPS has the right to feel safe and the right to learn.
Every teacher at RPS has the right to feel safe and the right to teach.

VALUES AND EXPECTATIONS

WE SHOW RESPECT



WE SHOW RESPONSIBILITY



WE SHOW INTEGRITY



WE SHOW EMPATHY



SCHOOL-WIDE

Be safe

Speak politely

Use appropriate language

Follow instructions and expectations

Value all of our environments

Own our actions

Be resilient

Be considerate of others

Help others

Be inclusive

LEARNING SPACES

Listen to others
Keep our classrooms clean

Be a learner
Be organised

Ask, use, return
Be supportive

Accept others
Let others learn

SCHOOL GROUNDS

Value our equipment and environment
Keep our school clean

Keep body parts and objects to ourselves
Return equipment
Be sun smart

Play in the correct spaces
Play fairly
Be an upstander

Include others
Take care of others

COMMUNITY

Use our manners

Look after public property

Represent our school with pride

Be considerate of others



BEING AT SCHOOL IS COOL

Why Attendance Matters - when your child misses school they miss opportunities to ...



Learn



Make Connections



Develop Life Skills



Rutherglen Primary School Behaviour Flowchart – Classroom

Low-Level

- Not finishing learning or staying on task
- Interrupting/Calling out
- Not being organised
- Not following instructions
- Not using materials properly
- Being late
- Teasing/excluding others
- Taking objects that aren't yours
- Bringing objects to the floor (without teacher permission)
- Not keeping your hands to yourself
- Running indoors

Discussion or Reminder from Staff

- about what you should be doing
- about our school values and expectations
- support provided and choice given to get back on track

REMAIN IN CLASSROOM

Mid-Level

- Repeated minor offences
- Swearing, racist or inappropriate language & rude gestures
- Misusing/disrespecting property
- Leaving classroom without permission
- Back-chatting
- Inappropriate use of technology
- Disrupting the learning of others
- Disrespecting adults (including CRTs, ES)

Teacher to apply appropriate consequences

- separation within the classroom or removal to another area
- stay in for part of recess or lunch – finish work, community service
- detention (record on compass, detention slip completed, scanned and sent home)

REMAIN IN / RETURN TO CLASSROOM

High-Level

- Repeated mid-level offences
- Damaging property/vandalism
- Endangering self or others
- Aggressive, intimidating or violent behaviour or language
- Bullying
- Directed/intentional swearing, abusive, racist or inappropriate language & rude gestures
- Consistently refusing teacher requests
- Leaving classroom buildings (unable to find)
- Leaving school grounds
- Theft

Principal or Teacher in Charge to apply appropriate consequences

- withdrawal from classroom
- detention (record on compass, detention slip completed and sent home)
- immediate suspension

This behaviour may also result in the following:

- individual behaviour management plan

RETURN TO CLASSROOM

WITH ONGOING MONITORING/BEHAVIOUR PLAN

Continued Low Level Behaviours
Apply Mid-Level consequences

Continued Mid-Level Behaviours
Apply High Level consequences



Rutherglen Primary School Behaviour Flowchart – Playground

Low-Level

- Not following the rules of the game
- Distracting the play of others
- Playing in the toilets
- Not following instructions or expectations
- Taking other people's property
- Unsafe play (sticks, stones, tackling, etc.)
- Continually playing in the sun without a hat
- Playing out of bounds (car parks, outside school grounds, etc.)
- Running around buildings/through eating areas
- Teasing/excluding others

Discussion or Reminder from yard duty teacher

- about what you should be doing
- about our school values and expectations
- support provided and choice given to get back on track

REMAIN IN PLAYGROUND

Mid-Level

- Repeated minor offences
- Being physical or rough play
- Swearing, racist or inappropriate language & rude gestures
- Misusing/disrespecting property
- Back chatting

Yard duty teacher to apply appropriate consequences

- walk with teacher
- community service (pick up rubbish, sweeping etc.)
- sit out of play (5-15mins)
- detention (record on compass, detention slip completed, scanned and sent home)

REMAIN IN / RETURN TO PLAYGROUND

High-Level

- Repeated mid-level offences
- Consistently refusing teacher requests
- Damaging property or vandalism
- Theft
- Physically hurting or threatening others
- Aggressive, intimidating or violent behaviour with or without objects
- Bullying (physical/verbal/social)
- Directed/intentional swearing, abusive, racist or inappropriate language & rude gestures
- Leaving school grounds

Principal or Teacher in Charge to apply appropriate consequences

- withdrawal from playground
- detention (record on compass, detention slip completed and sent home)
- immediate suspension

This behaviour may also result in the following:

- individual behaviour management plan

RETURN TO PLAYGROUND

WITH ONGOING MONITORING/BEHAVIOUR PLAN

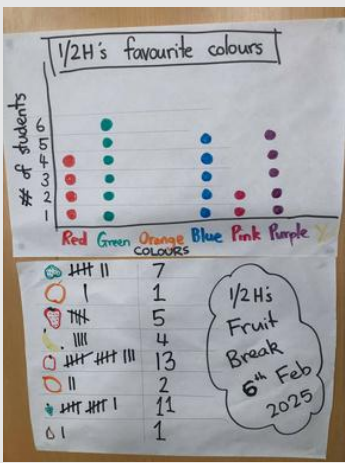
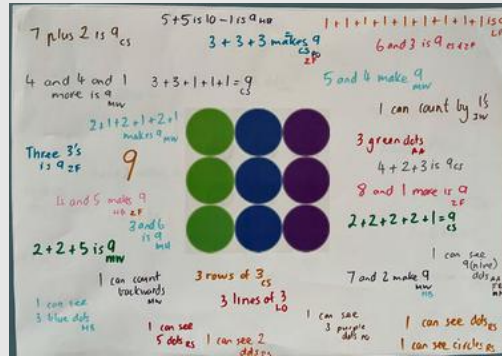
Continued Low Level Behaviours
Apply Mid-Level consequences

Continued Mid-Level Behaviours
Apply High Level consequences

Exploring Maths across the school



In Foundation we have been learning to recognise 11-20 as well as how to engage in a Number Talk



In Year 1-2H some hands on data collecting with the beanbag throw. We discussed how we would collect the data (we decided tally marks was easiest), then completed our throws and created a column graph with our data in our maths books. Then we compared our results with 1/2B.

Can you guess which class had the most beanbags landing in the hoops?



In year 3-4 maths we've been looking at data with some data talks, collecting data about our classmates and organising data cards to make observations and draw conclusions.



Year 5-6s made marble runs and mazes. Then looked for all the different ways they could apply mathematics to find out different information.



LUNCH ORDER MENU



HOT FOOD

Meat Pie	(full size)	\$4.50
Sausage Roll	(full size)	\$4.50

ROLLS

Chicken & Salad	\$5.00
Ham & Salad	\$5.00

SCROLLS

Vegemite and cheese Scroll	\$3.00
Cinnamon Scroll	\$3.00
Cheese & Sesame Sticks	\$2.00

DRINKS

Juice Box	\$2.00
Chocolate/ Strawberry Milk	\$2.50

SANDWICHES

Ham	\$2.50
Cheese	\$2.50
Ham & Cheese	\$3.00
Ham, Cheese & Tomato	\$3.50
Chicken & Lettuce	\$3.50
Vegemite	\$2.00
Jam	\$2.00

Toasted sandwiches add **\$0.50c**

Chicken & Cheese Toasted sandwich	\$4.00
-----------------------------------	--------

LUNCH ORDER MENU AVAILABLE: MONDAY - WEDNESDAY - FRIDAY

NOTE: These are special school canteen prices only

HOW TO ORDER?

- 1: On the front of a large brown paper bag write – NAME, CLASS, FOOD ITEMS, TOTAL COST & MONEY ENCLOSED (change will be provided)
- 2: Place orders into the lunch order tub in the front Office by 9am.
Orders CANNOT be placed direct at Caffeine 'n Machine.

Proudly supplied by ...

